



V-ATPase D Polyclonal Antibody

Catalog No	YP-Ab-16513
Isotype	IgG
Reactivity	Human;Mouse;Rat;Swine
Applications	WB;ELISA
Gene Name	ATP6V1D
Protein Name	V-type proton ATPase subunit D
Immunogen	Synthesized peptide derived from V-ATPase D . at AA range: 70-150
Specificity	V-ATPase D Polyclonal Antibody detects endogenous levels of V-ATPase D protein.
Formulation	Liquid in PBS containing 50% glycerol, 0.5% BSA and 0.02% sodium azide.
Source	Polyclonal, Rabbit,IgG
Purification	The antibody was affinity-purified from rabbit antiserum by affinity-chromatography using epitope-specific immunogen.
Dilution	Western Blot: 1/500 - 1/2000. ELISA: 1/40000. Not yet tested in other applications.
Concentration	1 mg/ml
Purity	≥90%
Storage Stability	-20°C/1 year
Synonyms	ATP6V1D; ATP6M; VATD; V-type proton ATPase subunit D; V-ATPase subunit D; V-ATPase 28 kDa accessory protein; Vacuolar proton pump subunit D
Observed Band	28kD
Cell Pathway	Membrane ; Peripheral membrane protein ; Cytoplasmic side . Cytoplasmic vesicle, clathrin-coated vesicle membrane ; Peripheral membrane protein . Cytoplasm, cytoskeleton, microtubule organizing center, centrosome . Cell projection, cilium . Localizes to centrosome and the base of the cilium. .
Tissue Specificity	Bone marrow,Brain,Heart,Pancreatic adenocarcinoma,Pituitary,Placent
Function	function:Subunit of the peripheral V1 complex of vacuolar ATPase. Vacuolar ATPase is responsible for acidifying a variety of intracellular compartments in eukaryotic cells, thus providing most of the energy required for transport processes in the vacuolar system.,similarity:Belongs to the V-ATPase D subunit family.,subunit:V-ATPase is an heteromultimeric enzyme composed of a peripheral catalytic V1 complex (components A to H) attached to an integral membrane V0 proton pore complex (components: a, c, c', c" and d).,
Background	This gene encodes a component of vacuolar ATPase (V-ATPase), a multisubunit enzyme that mediates acidification of eukaryotic intracellular organelles. V-ATPase dependent organelle acidification is necessary for such intracellular processes as protein sorting, zymogen activation, receptor-mediated endocytosis, and synaptic vesicle proton gradient generation. V-ATPase is composed of a



cytosolic V1 domain and a transmembrane V0 domain. The V1 domain consists of three A and three B subunits, two G subunits plus the C, D, E, F, and H subunits. The V1 domain contains the ATP catalytic site. The V0 domain consists of five different subunits: a, c, c', c'', and d. Additional isoforms of many of the V1 and V0 subunit proteins are encoded by multiple genes or alternatively spliced transcript variants. This gene encodes the V1 domain D subunit protein. [provided by RefSeq, Jul 2008],

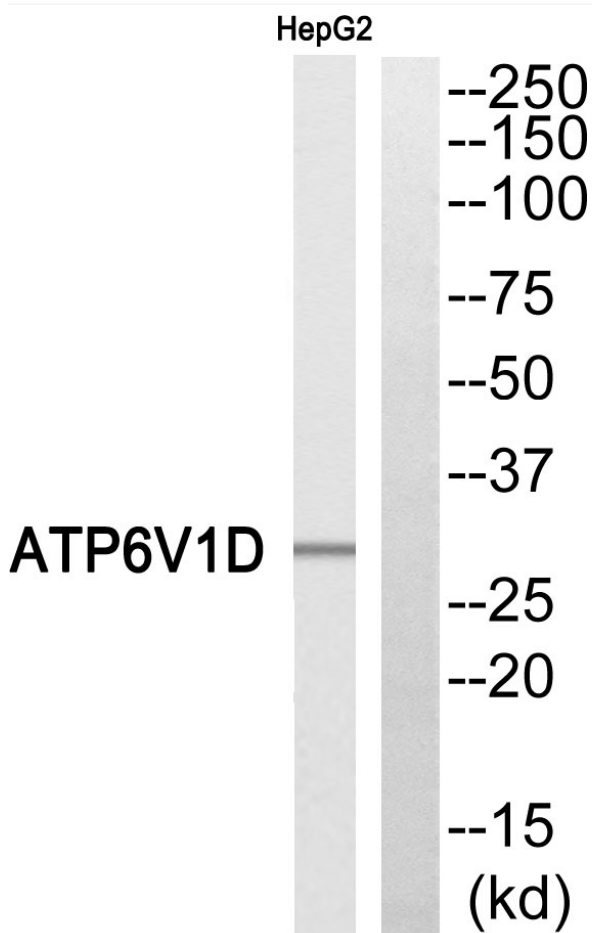
matters needing attention

Avoid repeated freezing and thawing!

Usage suggestions

This product can be used in immunological reaction related experiments. For more information, please consult technical personnel.

Products Images



Western blot analysis of ATP6V1D Antibody. The lane on the right is blocked with the ATP6V1D peptide.